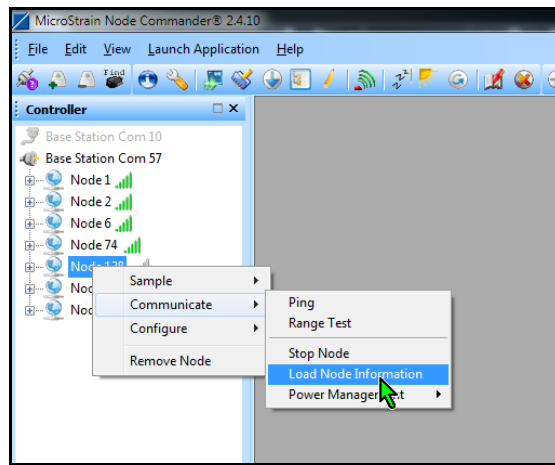


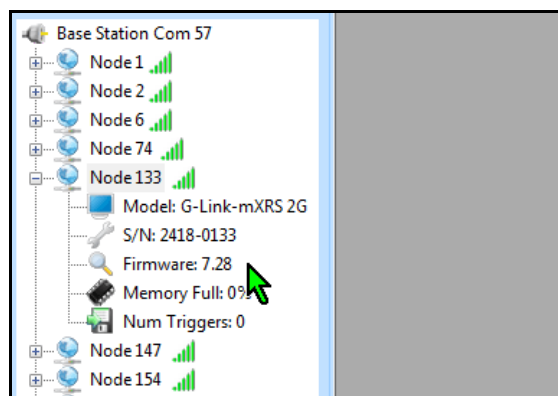
mXRS™ Wireless Node Firmware Upgrade Instructions

How to check what version of firmware is currently on your node

- Be sure that you are using the latest version of Node Commander® available for download at: <http://www.microstrain.com/wireless/software>
- Save the firmware file that is included in the zip file to your computer.
- In Node Commander®, right click on node of interest.
- Select **Communicate->Load Node Information**.

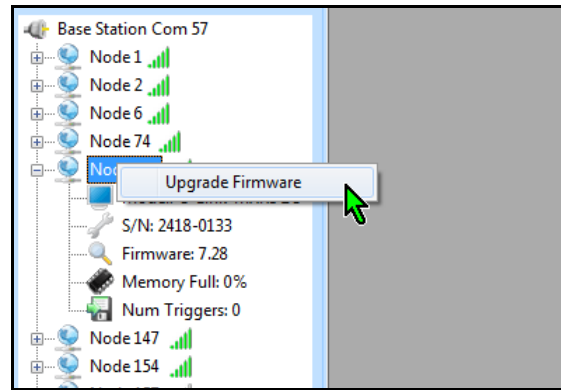


- Firmware on the node will be listed in the node information tree.

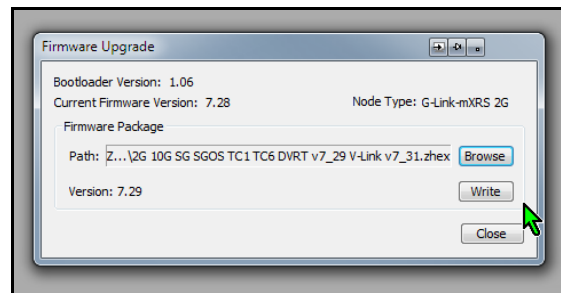


To upgrade node firmware

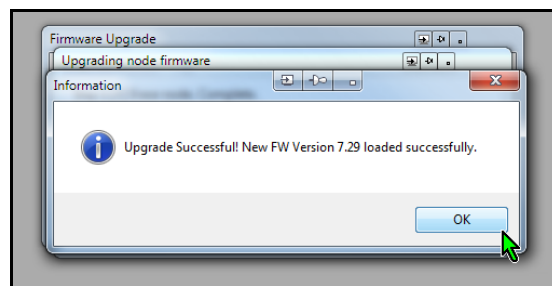
- Be sure to charge node prior to upgrading and that there is good communications between the node and base station.
- Press and hold the **F1** key and right click on the node in Node Commander®.
- Click **Upgrade Firmware**.



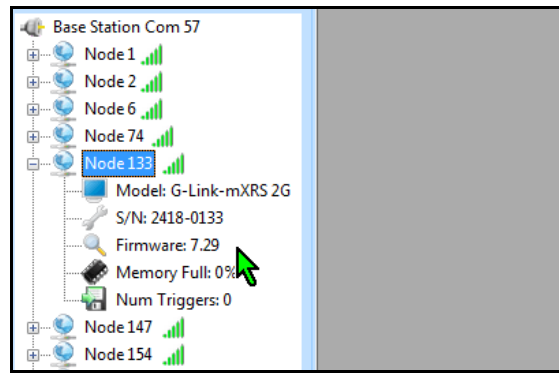
- Click **Browse** and navigate to the firmware file.
- Click **Write**.



- Listed in the window above is the current firmware (7.28) on the node and the version of firmware (7.29) after upgrade.
- The upgrade process when complete will open the below window.
- Click **OK**.



- Reload the node information to verify that firmware was upgraded.



Support

MicroStrain support engineers are always available to expand on this subject and support you in any way we can.